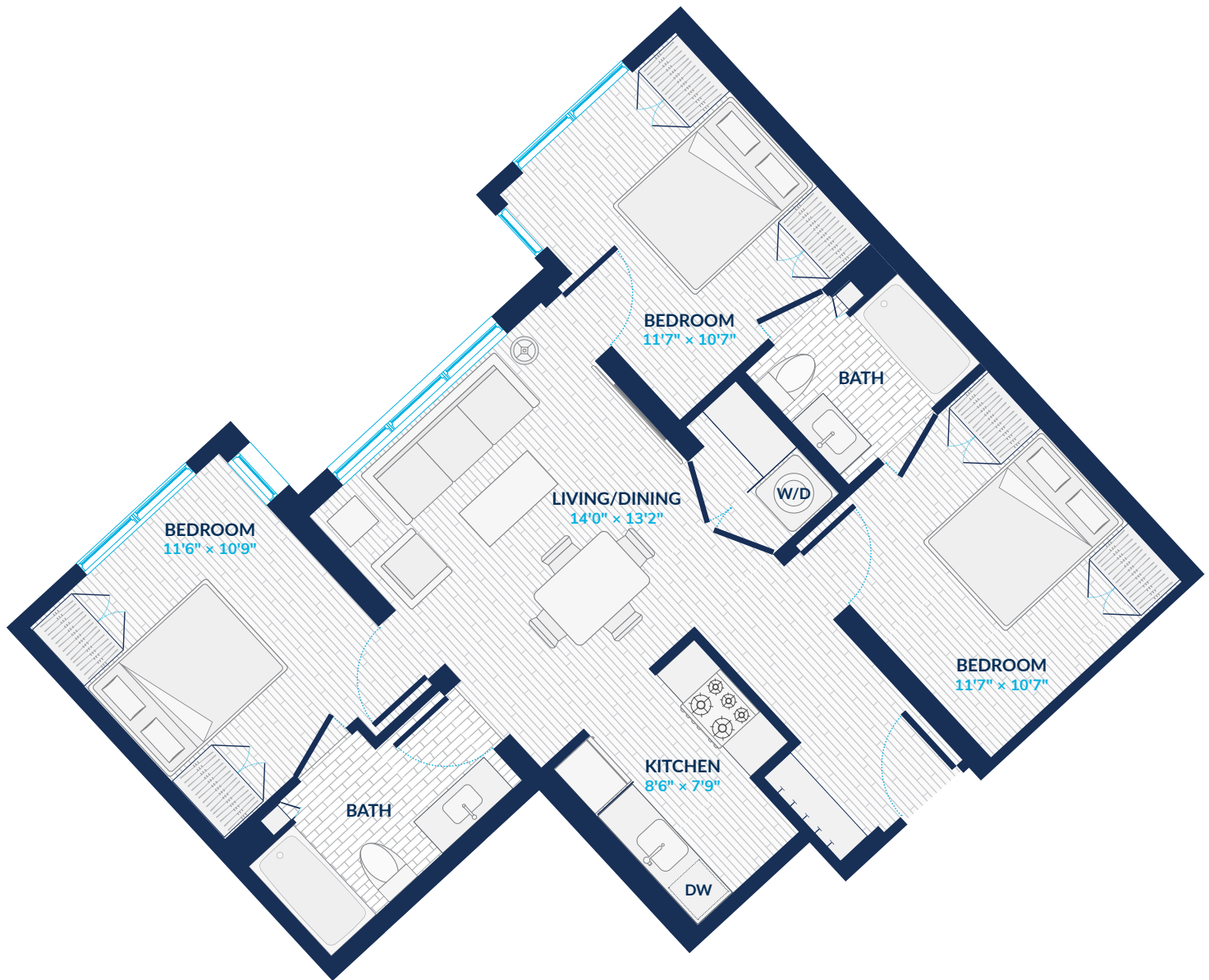


UNITS

203 | 303 | 403 | 503

3 BEDROOMS | 2 BATHROOMS



3701 New Hampshire Ave NW, Washington, DC 20010 | 202.753.5537 | [mododc.com](http://mododc.com)

Floor plans are artist's renderings and accuracy cannot be guaranteed. All room dimensions and area calculations are approximations. Plans and specifications are subject to change without notice or obligation. This document is for illustrative purposes only and is not part of a legal contract. See our Leasing Manager for specific details. © All Rights Reserved.

